



Check out our new filling nozzle! see page 20



Butter Paper! see page 15

DAIRY PROCESSING AND PACKAGING

SOLUTIONS



CARRIAGE MACHINE EQUIPMENT

About Us, Contact Us, Warranty.....	2-3	Milk Pump Assembly	9
Bottle Filler & Capper (Automatic).....	4	Smart Jet Blue Printer.....	10
Capper Attachments & Custom Conveyors ...	5	Butter Churns.....	11-14
Bottle Filler & Capper (Semi-Automatic).....	6	Butter Packer	15
Bottle Template Trays & Pushers	7	Yogurt Drain Crates	16
Semi-Autocycle & Caster Options	8	Cooling Milk Storage Tanks.....	18

CONTENTS

Hand Held Bottle Filler	20
Photo Gallery & Custom Equipment.....	21-22
Replacement Parts	23-26
Stainless Steel Milk Cans & Plastic Bottles....	27

Welcome!

Welcome to the 2026 Milk Equipment Catalog

We're glad to share our latest catalog and hope this finds you and your family well.

We're thankful to God for the blessings He gives us each day. It's worth reflecting: What would we have today if we were only given what we thanked Him for yesterday?

To our customers—thank you for your continued support and helpful feedback. You inspire us to keep improving in innovation, quality, and service.

This year, we're including a customer survey to better understand your needs. Please take a moment to fill out the form and send it back to us. Your input helps shape the future of our products and service.

If there's something you'd like us to source, we'd love to hear from you.

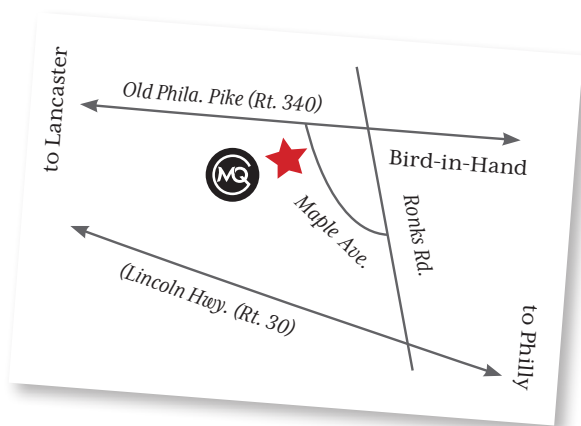
Wishing you continued blessings,
The CMQ Crew

About Us

A family owned and operated business since 1979, nestled in the heart of Lancaster County, Carriage Machine Shop manufactures quality carriages and parts, while offering friendly customer service.

Where to Find Us

Carriage Machine Shop, LLC
264 Maple Ave.
Bird-in-Hand, PA 17505
717-397-4079
For equipment: ext 125
For bottles: ext 123
717-397-4085 (fax)



Our mission



is to honor and glorify our **Creator**

by fostering a **family atmosphere,**



a positive **work environment,**



and exceptional **customer service**



alongside superior, industry-shaping **products.**



CMQ Milk Equipment

As a division of Carriage Machine Shop, CMQ (Carriage Machine Equipment) offers dependable processing and packaging solutions that help small creameries thrive.





Milk Processing Equipment Warranty & Terms

12 MONTH LIMITED WARRANTY:

Your milk processing equipment from Carriage Machine Shop LLC (CMS LLC) is warranted for a period of 12 months from the date of manufacture, subject to the terms & conditions as follows:

- CMS LLC will repair or replace any part of our milk processing equipment which becomes faulty within a period of 12 months from purchase, provided the milk processing equipment is returned to us, shipping paid, and that the milk processing equipment has only been used in the normal and correct way. We reserve the right to change/improve specifications from time to time without notice. **Any repairs or modifications performed by anyone other than CMS LLC automatically voids this warranty.**
- Parts: CMS LLC will replace, at no charge to the owner, any defective parts which CMS LLC determines affects the operation of the milk processing equipment. Replacement parts will be shipped to the owner. Owner is responsible for shipping costs.
- Labor: The owner may at his option and with CMS LLC approval, have the milk processing equipment shipped to our shop for repair. All labor and material costs for repair at the factory will be borne by CMS LLC, but the owner assumes all shipping costs. **Should the owner choose a source other than CMS LLC to repair the milk processing equipment, this warranty will be voided and CMS LLC no longer assumes responsibility for the milk processing equipment.**
- Warranty applies to original owner only.

SHIPPING DAMAGES:

Shipping damages must be reported within 24 hours of delivery. Please keep your milk processing equipment and all packing materials for possible inspection. If the milk processing equipment returned under this clause is found to be perfect and in full working order, the equipment will be returned to you and an administration fee of 15% of the purchase price plus the shipping cost back to you will be charged.

RETURNS:

No returns will be accepted unless authorized by a representative of CMS LLC. Merchandise will be credited when it is in our warehouse. Return shipping costs must be prepaid. A 25% restocking fee applies to all returned or refused merchandise. No returns will be accepted after 30 days unless upon agreement. Items to be returned must be in original condition.

NOTICE:

Carriage Machine Shop will not be liable or responsible for any type of accident that may arise from any of our products. Use all of our products at your own risk.

TERMS:

Wholesale accounts get 1% discount when paid in 10 days, net 30. Retail customers payment is due upon receipt.

For replacement parts or service, please contact the manufacturer:



CMQ Milk Equipment
717-397-4079 ext 125

A department of:



Fully Automatic

4070 Bottle Filler & Capper

Bottle your milk with simple efficiency with the help of our Fully Automatic Bottle Filler & Capper! Place your empty glass or plastic bottle on the conveyor, and the machine will do the rest, perfectly prepping it for the store shelf.

The unique craftsmanship of our machinery, designed for grade A use, and its digital operating screen makes for quick and easy operation. To simplify things further, add an optional product pump and level control. This machine can be operated by just one person, so get ready to amp up for production and your sales!

- Fills glass or plastic bottles
- Compatible with DBJ screw cap or Stanpac Snap Caps
- Choice of capper (see next page)
- Removable star wheels to accommodate different bottle sizes
- Adjustable filler bowl to accommodate different bottle heights
- High capacity Fogg fill valve w/ 6 gallon adjustable reservoir
- Lid for storage vat equipped with ports and a vent
- Fills up to 200 gallons or 300 1/2 gallons per hour
- Touchscreen for user-friendly operation
- Cycle counters for tracking production
- Includes infeed and outfeed conveyor
- Stainless steel construction with rounded corners for easy cleaning
- Polycarbonate bottle shield
- Adjustable feet for leveling
- Optional casters (see page 8)

Shown with 4070 Screw Cap Capper for Plastic and Auto Cycle.



Dimensions	
L	10ft
W	3ft
H	6ft 8in

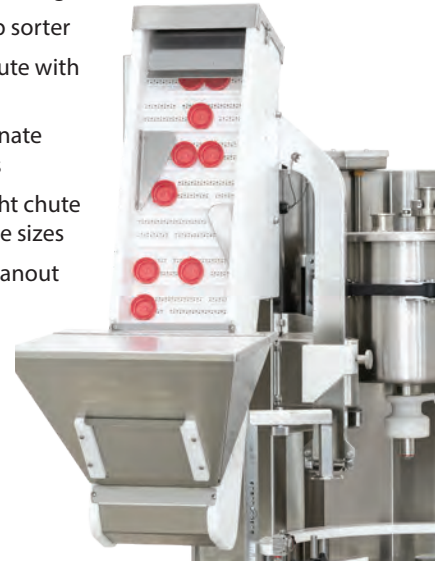
4070 Screw Cap Capper for Plastic

- Adjustable torque screw cap tightener
- All food-grade plastic
- Easy wash-down design
- Inclined belt cap sorter
- Stainless cap chute with cap level sensor
- Clear polycarbonate conveyor covers
- Adjustable height chute for various bottle sizes
- Cap bin with cleanout



4070 Stanpac Glass Capper

- Automatic cap stomper
- All food-grade plastic
- Easy wash-down design
- Inclined belt cap sorter
- Stainless cap chute with cap level sensor
- Clear polycarbonate conveyor covers
- Adjustable height chute for various bottle sizes
- Cap bin with cleanout



CAPPER

CHOOSE BOTTLE SIZE TEMPLATES MADE TO FIT

Various sized star wheels, guides & lifters



Fogg filler valve spacer rings and extra O-rings



TEMPLATE

Fully Automatic Bottle Filler & Capper in operation



Custom Conveyors

Any length you need!



OPTIONS



Semi-Automatic 4060 Bottle Filler & Capper

Get ready to bottle more milk with our **Semi-Automatic Bottle Filler & Capper** equipment! The unique craftsmanship of this machine makes both operating and cleaning a breeze. Designed for grade A use, this machine works with both glass and plastic bottles.

Add on the optional product pump, level control and Auto Cycle options with a sleek, clean digital operating screen. Perfect for low volume product runs. This process can be overseen by just one person, but to maximize efficiency, it works best with two. Get ready to crank out the milk and crank up your sales today!

Shown with 4060 Screw Cap Capper for Plastic and Auto Cycle and 4064 Semi Auto Cycle option.



- Fills glass or plastic bottles
- Compatible with SC2, DBJ screw cap, or Stanpac Snap Caps
- Choice of capper (see next page)
- Removable template to accommodate different sized bottles
- Adjustable filler bowl to accommodate different height bottles
- High capacity Fog fill valve
- Lid for storage vat equipped with ports and a vent
- Fills up to 200 gallons or 300 1/2 gallons per hour
- Stainless steel construction with rounded corners for easy cleaning
- Polycarbonate bottle shield
- Counterbalanced manual foot pedal or Auto Cycle
- Adjustable feet for leveling
- Caster option

Dimensions

L	5 ft
W	2 ft
H	7 ft

4060-SCREW Screw Cap Capper for Plastic

- Adjustable torque screw cap tightener
- All food-grade plastic
- Easy wash-down design
- Inclined belt cap sorter
- Stainless cap chute with cap level sensor
- Clear polycarbonate conveyor covers
- Adjustable height chute for various bottle sizes
- Cap bin with cleanout



4060-GLASS Stanpac Glass Capper

- Automatic cap stomper
- All food-grade plastic
- Easy wash-down design
- Inclined belt cap sorter
- Stainless cap chute with cap level sensor
- Clear polycarbonate conveyor covers
- Adjustable height chute for various bottle sizes
- Cap bin with cleanout



4060-SNAP Snap Cap Capper for Plastic

- Automatic cap stomper
- All food-grade plastic
- Easy wash-down design
- Spinner cap sorter design
- Stainless cap chute
- Adjustable height chute for various bottle sizes
- Cap bin



CAPPER

Bottle Template Trays & Pushers

- Heavy gauge stainless steel
- Adjustable
- Quick change
- Easy to clean



4023A Bottle Pusher for templates C, D & H



4023B Bottle Pusher for templates E, F, G & I



4023E Template C for tall quart



4023F Template D for round pint



4023G Template E Round 12 oz & square 16 oz



4023C Template A for plastic gallons



4023H Template F StanPac glass half gallon



4023D Template B for plastic half gallon & squat quart



4023I Template G StanPac glass quart & squat pint

TEMPLATE



Manual Foot Pedal Setup

Cost effective, low-maintenance setup for your bottler! Comes standard.

- Counterbalanced manual foot pedal
- No air supply required
- Simple operation



(rear view)



4064 Semi Auto Cycle

Easier and less strenuous on your bottler operator compared to the manual version!

- Automated foot pedal
- Manual & auto modes
- Automated capper
- Job cycle counters for tracking production
- Requires air supply 90 psi
- Timed fill time



(rear view)

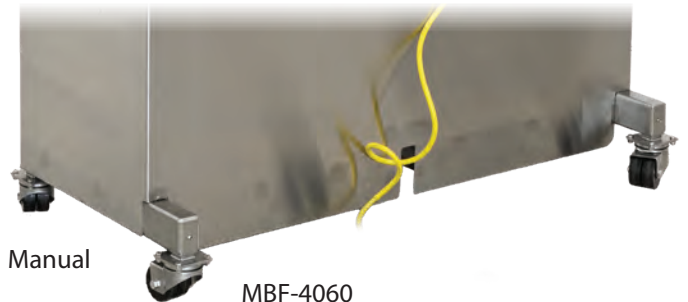


4106 Swivel Caster Option

Swivel casters make machine transporting easy!



AFM-4070



Manual

MBF-4060



4045 Milk Pump Assembly

This product pump boasts premium stainless steel as well as a 1HP TEch Top Motor and a Bowpeller Pump which utilizes an innovative, patented impeller and casing for low-shear, high efficiency and low NPSH. These feature result in lower product degradation, less emulsification of gases and longer seal life. This pump is ready to plug in and transfer milk from tank to pasteurizer or tank to tank. You can expect up to 50 GPM depending on total milk solids.

- 1 HP
- 110V, 60Hz, single phase
- 50 GPM
- Stainless steel
- Wash-down capable

4044 MPCB Vari-speed Control Box



- 110V, 60Hz, Single phase power source
- 220 3-phase output
- Heavy duty plastic box construction
- Dual selector switch for probe level controller or manual operation
- 1 HP frequency drive

4044 PIPE KIT

- Basic SS Piping and Check Valve for Pump System Connection to Fillers



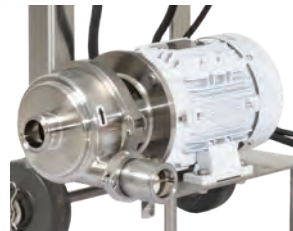
4044 PROBE Level Controller

- SS probe
- Stainless level adjustment bracket



4045 PUMP

- Bowpeller B15154 pump
- 1HP Tech top wash-down motor
- Available in 110 single phase or 220 3-phase for frequency drive box
- 4 blade impeller style



80000-BLUE Smart Jet Blue Printer

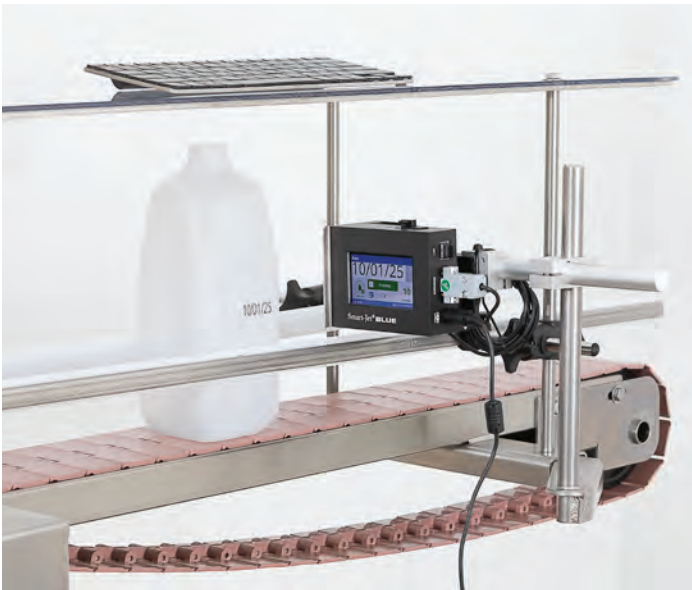


MQ-9279-110

**Smart Jet Printer
Mount Bracket**

82706 Replacement ink cartridge

Smartjet Non-Porous Black Ink



- One to six lines of print
- Large, color screen rotates with printer
- Prints on both porous and non-porous surfaces
- No moving parts and maintenance-free
- High-resolution characters (150 per line)
- Plug and print with TIJ cartridge technology
- Prints high-quality bar codes, QR codes, up to 20 logos
- Anti-shock mounting mechanism adjusts to irregularities in box for consistently smooth and high-quality printing results
- Dynamic bar codes can create a unique number for each individual product
- Stand alone operation with wireless keyboard
- Store up to 100 messages on printer's memory
- Password protected
- Back up and restore to USB
- 6 default font heights
- Bi-directional for traversing head applications

35-Gallon 4051-35BC Butter Churn

The stainless steel **35-Gallon Butter Churn** allows small farmers to take butter-making to the next level! This sturdy, reliable piece of equipment offers a fast and efficient way to turn gallons of cream into delicious, farm-fresh butter.

- Variable frequency drive to adjust different speeds.
- Removable paddle and rounded edges for easy cleaning.
- Adjustable angles for draining and washing.
- Plugs into a regular 220 single phase outlet
- Water jacket for adjusting temperature.
- Minimum fill: Approximately 30% of total capacity = 10 gallons
- Maximum fill: 35 gallons



Dimensions

L	72"
W	30"
H	42"



Churn can rock back & forth to work the butter and remove all buttermilk. Also helpful for washing.



Enclosed water-proof electrical control box with frequency drive for speed control.



8-Gallon 4050-8BC Butter Churn

**MOST
POPULAR
SIZE!**

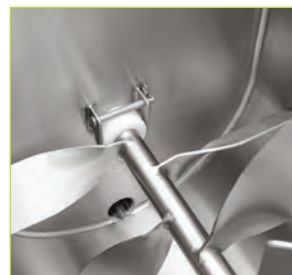
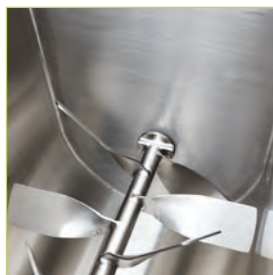
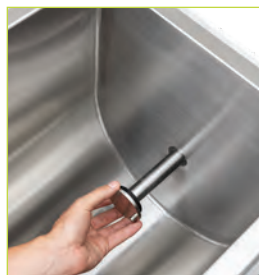
The stainless steel **8-Gallon Butter Churn** allows small farmers to take butter-making to the next level! This sturdy, reliable piece of equipment offers a fast and efficient way to turn gallons of cream into delicious, farm-fresh butter.

- Variable frequency drive to adjust different speeds
- Removable paddle and rounded edges for easy cleaning
- Adjustable angles for draining and washing
- Plugs into a regular 110 volt outlet
- Water jacket for adjusting temperature
- Minimum fill: Approximately 30% of total capacity = 2.5 gallons
- Maximum fill: 8 gallons



Dimensions

L	40"
W	22"
H	40"



Removable paddle & drive shaft designed for easy cleaning.

2-Gallon

4003 Homeowner's Butter Churn

(Drill not included)

A simple way for any homeowner to turn a gallon of cream into butter!

- FDA approved food-grade plastic bucket w/ snap-on lid
- Stainless steel paddle
- Powered by drill
- 2 gallon capacity
- Strong handle
- Can be disassembled completely for washing

MAKES
A GREAT
GIFT!



Homemade Butter Instructions

Step 1: Proper Temperature

Clean and sterilize the butter churn. Fill bucket halfway with cream and allow cream to warm to 50-55° F in summer and 55-60° F in winter for churning.

Step 2: Churning

Insert paddle into small housing on bottom of bucket and feed shaft through bucket's lid. Tightly secure lid and attach power drill to the paddle's shaft. Run drill at medium speed until butter has separated from the liquid (takes 10-15 minutes if conditions are right).

Knowing when to stop: Churn until the butter granules start to "chunk up" and stick together and separate from the liquid (buttermilk).

Step 3: Washing the Butter

Pour contents of bucket into a strainer set over a bowl. Reserve the buttermilk for cooking or drinking (refrigerate immediately). Rinse under very cold water while squeezing and kneading the butter until the water

runs clear. *The cloudy water is buttermilk which must be washed out or it will produce off-flavors in the butter. Discard this cloudy liquid.*

Step 4: Shaping

When the butter is clean, work with a wooden spoon or rubber spatula to press out any remaining liquid. Discard this liquid. If desired, add salt to the butter. (Salted butter will keep longer.)

Step 5: Storage

Transfer the butter to a clean container or plastic wrap for keeping, pressing with a wooden spoon or spatula to dispel any air bubbles. Refrigerate or freeze until ready to use.

For a delicious twist, try adding

- Honey & cinnamon
- Fresh parsley, tarragon & thyme
- Roasted red pepper & garlic
- Lemon zest, lemon juice, fresh dill

Be sure to thoroughly wash and dry the bucket and paddle after each use!

100 lb.

4054-100 Butter Packer

With lid only, no attachments included.



4054-16oz

Butter Packer Spiral attachment for filling plastic 16 OZ containers



4054 2x3 Mold

Butter Packer Lid only with Butter Mold attachment to make 2" x 3" x 5" (1 LB packs)



MQ-10725-100 Butter Paper

Norpack Delwrap Waxpaper 10 LB pack (paper size 12" x 10.5")



MQ-11593-100 Butter Paper

Norpack Delwrap Waxpaper (5 pcs 10 LB pack per case) Paper size 12 x 10.5



4028 CART Drain Crate Stacking Cart & Stacking System

Get organized! Turn your yogurt drain crates into a system for easy whey collection and mobility.

- Heavy duty stainless steel
- Heavy duty casters
- Stainless dividers
- Drain port
- 24 gallon bottom collection pan
- Holds 24 drain crates

EASY TO MOVE AROUND!

Dimensions	
L	74"
W	23"
H	70"



Convenient Drain Spout



4047 CART Drain Crate Stacking Cart & Stacking System

Get organized! Turn your yogurt drain crates into a system for easy whey collection and mobility.

- Heavy duty stainless steel
- Heavy duty casters
- Stainless dividers
- Drain port
- 12 gallon bottom collection pan
- Holds 12 drain crates

Dimensions	
L	40"
W	23"
H	66"

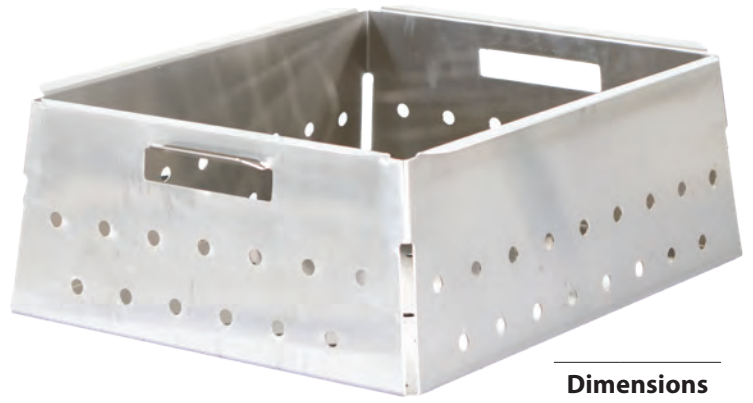


4028 CRATE

Yogurt Drain Crate

Cost effective whey drainage system for the small creamery!

- For Greek style yogurt
- Heavy duty stainless steel
- Stackable design
- 8 gallon capacity
- Lift handles



Dimensions	
L	19.5"
W	16"
H	7"



4028COLLECTION

Single Crate Collection Pan for Yogurt Drain Crate



4028CLOTH Draincloth

47" x 60" White Disposable, 30GR, 180 Sheets per Case, Fits in **4028 Drain Crate** (Case Size 48 x 13 x 10 x 26lbs)



Cooling

Milk Storage Tanks

(Milkplan brand)

- Vertical type cylindrical tank with smooth inner walls, round corners, perfectly polished welding and adjustable feet.
- Anti-magnetic stainless steel 18/10, DIN 1.4301 (AISI 304) for both inner and outer tank.
- Agitation motor by the French company Sirem, 30 rpm with a gravity switch.
- Tecumseh, Maneurop, Copeland and Embraco cooling units.
- Special thermal insulation with ecological and high-density 45mm-thick polyurethane foam at the side walls and 100mm at the base of the tank.
- Specially-designed, laser welded & high-resistance evaporator for more efficient milk cooling.
- Stainless steel perforated cover with blinds for the protection of the cooling unit.



MP Vertitank:

Stainless steel, open type milk cooling tanks for fast and stable milk cooling. Manufactured according to the highest European and American standards for 2 and 4 milkings. The MP Vertitank series, with capacities from 13.2–660.4 gal (50lt to 2,500lt), meets the needs of all dairy, livestock units and cheese dairies.

Optional Components:

- Electronic thermometer and cooling and agitation thermostat by Dixell of an IP 65 sealing rating.
- For 2 and 4 milkings.
- Robust lid without screws with stainless steel springs for easy opening and closing of the tank.
- One-piece agitator.

Optional Components:

- Voltage controller (installation is indicated in regions with frequent voltage fluctuations)
- High precision weighing system ($\pm 0.1\%$) with a separate LCD display with 4 or 6 load cells.
- Cooling units for very warm climates (Tropical +109.4 °F [+43 °C]).
- Various options of stainless steel valve threads DN, SMS, IDF, TRICLAMP.



15–90 Gallon Tanks

Tanks from 15–90 gallons are mainly suitable for sheep and goat livestock units and can serve milk collection of 2 or 4 milkings.

- MP15** 15 gal. capacity, 110 Volt (22" long x 21" wide X 33" high)
- MP30** 30 gal. capacity, 110 Volt (31" long x 27" wide X 39" high)
- MP60** 60 gal. capacity, 110 Volt (41" long x 36" wide X 39" high)
- MP90** 90 gal. capacity, 110 Volt (45" long x 39" wide X 41" high)

112–525 Gallon Tanks

Tanks from 112–525 gallons can serve small cow milking parlors and large sheep/goat milking operations.



- MP112** 112 gal. capacity, 220 Volt single phase (73" long x 43" wide X 33" high)
- MP140** 140 gal. capacity, 220 Volt single phase (73" long x 43" wide X 38" high)
- MP170** 170 gal. capacity, 220 Volt single phase (63" long x 43" wide X 45" high)
- MP225** 225 gal. capacity, 220 Volt single phase (85" long x 51" wide X 41" high)
- MP285** 285 gal. capacity, 220V (single phase) or 3-phase available (93" long x 59" wide X 40" high)
- MP330** 330 gal. capacity, 220V (single phase) or 3-phase available (92" long x 59" wide X 43" high)
- MP400** 400 gal. capacity, 220V (single phase) or 3-phase available (92" long x 59" wide X 52" high)
- MP525** 525 gal. capacity, 220V (single phase) or 3-phase available (92" long x 73" wide X 48" high)

4076 Hand Held Filling Nozzle

- Made of food grade parts
- Less foam=less waste
- Disassemble for cleaning
- Insulated comfortable handle
- Hose and fittings available (sold separately)
- Fill out of bulk tanks with ease
- Made in USA



MQ-11721-907 REPLACEMENT O-RING

High-Temperature Silicone O-Ring, 3/32 Fractional Width, Dash Number 115



Alternate valves and fittings available upon request.

4076-HOSE

High-Pressure Soft PVC Plastic Tubing for Food, Beverage, and Dairy, 1" ID, 1-19/64" OD

Sold by the ft.

See Milkplan
Storage tanks
on pages 18 & 19





Product Gallery

See some of our products in action, along with recent custom equipment we've built. Feel free to call anytime to discuss your unique needs and we'll work to fit you with the best equipment or create a new solution just for you!

Yogurt Draining Crate System for Eli Franklin of NY



35 gal. butter churn for Halsey Cheese



Automatic bottle filler and conveyor line for Stanpac glass bottles at Keystone Pacific

Cap applicator chute on the Automatic Bottle Filler



Custom cupping machine for Valley View Cheese of NY

Butter Packer
Dutch Meadows Creamery, PA



Parts rack for Valley View Cheese of NY



REPLACEMENT PARTS



A211SS-024-D

ARO 4 way 1/8" Solenoid / Spring Valve 24 volt (A211SS-024-D) Includes the air supply and exhaust fittings



4070G10-1

Silicone Rubber Bottle Grip Disc



7880T344

Push-to-Connect Tube Fitting for Air and Water, Through-Wall Adapter, 1/4" Tube OD x 1/4 NPT Female bulkhead



SA2000

SA-2000/2010-2S-55-DD Mounted Capping Power Unit (No Chuck or Inserts)



315L075

L Series Timing Belt 84 Teeth 31.5 Outer Circle .75 wide



6111K61

Swivel Leveling Mount Corrosion-Resistant 303 Stainless Steel with 2" Long 3/8"-16 Threaded Stud



5128A44

Low-Profile Hold-Down Toggle Clamp, Open Arm, 18-8 Stainless Steel, 500 lbs. Holding Capacity



4063M2

Spinner Capper GearMotor Only 115 VAC 1 Phase 139 RPM 1/25 HP 12.1:1 Gear Ratio Permanent Split Capacitor Type



SA 2000 CHUCK

C134 Kinex Chuck with inserted L134A White Rubber Liner



4061M2

1LPW2 DC Gearmotor 21 RPM 90V 50.0 in/lb TENV



4063 TOP FEED

Snap Cap Top Feed Chute Assembly



4063M1 (KIT)

Spinner Capper MOTOR PARTS KIT Includes (Capacitor, capacitor Bracket and rubber, cord Breaker, din rail and switch parts,



4063

Snap Cap Applicator Chute



SA 2000 LINER

L134A White Rubber Liner 55 Durometer



4062A

Screw-Glass Capper Top Feed Chute



4068

Machined Kinex chuck for red 38mm DBJ cap. Adapter to 3/8" female square



70355K99

Power Cord, NEMA 5-15 Plug, 14 Wire Gauge, 9 Feet Long, SJTW



4062K

DBJ Screw Cap Applicator Chute



9268K137

5" Long Hollow Mounting Rod with Two Bolt Clamp for Conveyor Guide



STPU-2000-2S

STPU-2000-2S-4 stainless steel capping head for SA-2000/2010 capping machines. (No Chuck or Inserts)



2531K162

Bolt-Down Swivel Leveling Mount with Cushion, 3" Long 5/8"-11 Threaded Stud and 3" Base Diameter



93015A219

303 SS Easy-Clean Knob with 5/16"-18 Threaded Stud

**6026T12**

SS Aro Quick Disconnect Hose Coupling

**94135K16**

302 Stainless Steel Corrosion-Resistant Extension Spring with Loop Ends, 2.5" Long, 0.188" OD, 0.023" Wire Diameter

**S37102742062**

Flexible Draw Latch Lever Stainless Steel

**94135K72**

302 Stainless Steel Corrosion-Resistant Extension Spring with Loop Ends, 1.125" Long, 0.234" OD, 0.020" Wire Dia

**4062J**

Glass Cap Applicator Chute

**9268K85 (SET)**

Plastic Connector with Knobs, for 1/2" Diameter Rod

**503-222**

Fogg Valve Sleeve Tool

**114S**

Fogg o-ring silicone 114

**110-0555**

Fogg Spacer Seal 0..38 LG 0.98 ID 2.00 OD

**110-0055**

Fogg Spacer Seal 0.13 LG 0.98 ID 2.00 OD

**110-0175**

Fogg Spacer Seal 0.25 LG 0.98 ID 2.00 OD

**503-133-VKI**

Fogg Filler Valve Kit

**503-140A**

Fogg 4FA Valve Diaphragm (32 D)

**503-134**

Fogg Valve Sleeve R1.125 x 1.50

**MQ-5862-120**

Fogg Spacer Kit

**EZ10438**

1-1/2 Milk Pump Check Valve assembly

**503-624**

Fogg Splash Deflector

**4059 FILL TUBE**

Fill Tube for Vat

**4059 VAT**

Bottler Vat with Fogg spud welded in

**4059 LID**

14" LID with ports for Vat

Butter Churn Parts



UCF20928KML

1-3/4 Face Mount
Bearing
(35 Gallon BC)



4051M4

Brass Drive Shaft
Receiver Assembly
(35 Gallon BC)



4051M5

Stainless Removable
Drive Shaft assembly
(35 Gallon BC)



UCF20824KML

1.5" Flange Mount
Bearing
(8 Gallon BC)



4050V4

Brass Drive Shaft
Receiver Assembly
(8 Gallon BC)



4050V5

SS Removable Drive
Shaft assembly
(8 Gallon BC)



9562K48

Stretch Fit Seal
For Shaft



2833T521

Swivel w/ Lock Caster



2833T55

Rigid Caster



MQ-476-110

Swivel SS Caster
Total Lock



MQ-477-110

Straight SS Caster



98470A385

Shoulder-Style Ring-Grip Quick-
Release Pin, 18-8 Stainless Steel, 3/8"
Diameter, 2-1/2" Usable Length

92391A044

18-8 Stainless Steel Hairpin Cotter
Pin for 5/16"- 3/8" Pin Diameter, 5/64"
Wire Diameter, 1/4" Eye Diameter



EZ14768

Repair kit for
new-style
Ben Anderson
pump

Piping Accessories Please Note: Size is based on the outside dimension of the tube and not the flange.

Tri clamp, heavy duty

EZ17130	1-1/2"
EZ17131	2"
EZ17132	2-1/2"
EZ17231	3"
EZ17232	4"



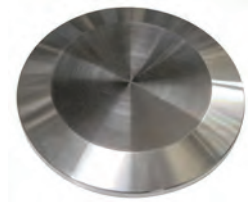
Tri clamp end cap with nipple

EZ61056	1-1/2", 5/8" nipple, 3/4" OD
EZ61057	1-1/2", 3/4" nipple, 7/8" OD
EZ61058	1-1/2", 7/8" nipple, 1" OD
EZ61062	2", 5/8" nipple, 3/4" OD
EZ61063	2", 3/4" nipple, 7/8" OD
EZ61064	2", 7/8" nipple, 1" OD



Tri clamp end cap

EZ54291	1-1/2"
EZ54292	2"
EZ54290	2-1/2"
EZ54293	3"
EZ54294	4"



Kleenflo butterfly valve tri clamp

EZ17061	1-1/2"
EZ17062	2"
EZ17063	2-1/2"
EZ17064	3"
EZ17065	4"



Tri clamp gasket

EZ54326	1-1/2"
EZ54327	2"
EZ54328	2-1/2"
EZ54329	3"
EZ54325	4"



Concentric reducer, tri clamp

EZ54610	1-1/2" x 1"
EZ54611	2" x 1"
EZ54430	2" x 1-1/2"
EZ54431	2-1/2" x 1-1/2"
EZ54432	3" x 1-1/2"
EZ54435	2-1/2" x 2"
EZ54436	3" x 2"
EZ54440	3" x 2-1/2"
EZ54477	4" x 2"
EZ54479	4" x 3"



Tri clamp tee

EZ54609	1"
EZ54310	1-1/2"
EZ54312	2"
EZ54311	2-1/2"
EZ54313	3"
EZ54314	4"



Eccentric reducer, tri clamp

EZ54612	1-1/2" x 1"
EZ54613	2" x 1"
EZ54460	2" x 1-1/2"
EZ54461	2-1/2" x 1-1/2"
EZ54462	3" x 1-1/2"
EZ54465	2-1/2" x 2"
EZ54466	3" x 2"
EZ54470	3" x 2-1/2"



Tri clamp 90 degree elbow

EZ54600	1"
EZ54300	1-1/2"
EZ54302	2"
EZ54301	2-1/2"
EZ54303	3"
EZ54304	4"



Stainless Steel Milk Cans



EZ30194



EZ30192



EZ30197



EZ30195



EZ30196

These cans are made of 18 gauge stainless and are for holding milk only and are not designed to have vacuum applied. Lid and gasket are included. Lids have a silicone seal. The lid attaches using 2 inch "snap down" latches directly across from each other. These milk cans are not stackable.

- EZ30194** 70lb. stainless milk can with cover
- EZ30192** 90lb. stainless milk can with cover
- EZ30197** 100lb. stainless milk can with cover
- EZ30195** Silicone gasket for milk can lid
- EZ30196** Cover with silicone gasket for milk can

HDPE & PET Bottles



Your Quality Products Deserve Classy Packaging

Cap Colors:



buff



red



orange



yellow



black



green



royal blue



brown



purple




white



pink



waterfall blue

- Safe alternative to glass to keep products fresh
- Great for milk, juices, cider, yogurt smoothies, & other liquids
- Freezable
- DBJ & SCII neck finish
- P.E.T.E. bottle (polyethylene terephthalate)
- Recyclable plastic #1  (most commonly accepted plastic in curbside recycling programs) *
- BPA Free *
- MADE IN THE USA

**PET only*





Manufactured by:



Carriage Machine Shop, LLC
264 Maple Avenue
Bird-in-Hand PA 17505
717-397-4079 ext 125



MADE IN USA

11-2025