



# *Carriage Catalog* *2023*





## Our Guarantee

### CUSTOM CARRIAGES GUARANTEE:

Carriage Machine Shop, LLC (CMS LLC) delivers quality custom carriages - vehicles that comply with the specs you request and approve. We will not start the manufacturing process until you are satisfied with the design and details of your order. Be sure to look at physical color swatches before approving your order (Photos are for illustration purposes only. They are not an exact depiction of colors.)

We want you to be satisfied with any carriage you purchase from us. If the custom vehicle you receive does not meet your expectations, contact us within 30 days of receiving your order. If it is determined that there were errors in manufacturing or the carriage differs from what was approved, then we will replace all defective merchandise.

### RETURNS:

No returns will be accepted unless authorized by a representative of CMS LLC. Merchandise will be credited when it is in our warehouse. Return shipping costs must be prepaid. A 25% restocking fee applies to all returned or refused merchandise. No returns will be accepted after 30 days unless upon agreement. Items to be returned must be in original condition.

### SHIPPING DAMAGES:

Shipping damages must be reported within 24 hours of delivery. Please keep your carriage and all packing materials for possible inspection. If the carriage returned under this clause is found to be perfect and in full working order, the carriage will be returned to you and an administration fee of 15% of the purchase price plus the shipping cost back to you will be charged.

### TERMS:

We require a 25% **non-refundable** deposit to accompany all orders and balance due upon completion.

### 12 MONTH LIMITED WARRANTY:

Your carriage from CMS LLC is warranted for a period of 12 months from the date of manufacture, subject to the terms & conditions as follows:

- CMS LLC will repair or replace any part of our carriages which becomes faulty within a period of 12 months from purchase, provided the carriage is returned to us, shipping paid, and that the vehicle has only been used in the normal and correct way. We reserve the right to change/improve specifications from time to time without notice. **Any repairs or modifications performed by anyone other than CMS LLC automatically voids this warranty.**
- Parts: CMS LLC will replace, at no charge to the owner, any defective parts which CMS LLC determines affects the operation of the carriage. Replacement parts will be shipped to the owner. Owner is responsible for shipping costs.
- Labor: The owner may at his option and with CMS LLC approval, have the carriage shipped to the factory for repair. All labor and material costs for repair at the factory will be borne by CMS LLC, but the owner assumes all shipping costs. **Should the owner choose a source other than CMS LLC to repair the carriage, this warranty will be voided and CMS LLC no longer assumes responsibility for the carriage.**
- Warranty applies to original owner only.

### NOTICE:

Carriage Machine Shop will not be liable or responsible for any type of accident that may arise from any of our products. Use all of our products at your own risk.

*Cover photo: Bonnie Fahrner in her BIH Road Cart (Photo by MikeScottPhotos.com) On the front cover: Kathleen Carey Plock in her BC Aerocrown (Photo by Gerald Plock); Aaron Soldavin & Kelly Soldavin in their BIH Phaeton Sport (Photo by PICS OF YOU); Lydia Gray in a BIH Flyer (Photo by Dream Vision Photo).*

*On the back cover: Irene Gillis in a BIH Phaeton Sport (Photo by PICS OF YOU); Suzy Stafford & Gail Aumiller in a BIH Country Gig (Photo by Daria Killinger of Equiscape Photography); Mandy Hood in a BC Aerocrown (Photo by Ekberg Equine Photography)*





# Crafting Quality Carriages in the Heart of Lancaster County

## Bird-in-Hand

Welcome to our charming village of Bird-in-Hand, Pennsylvania. Ever since the Quakers, Mennonites, and Amish settled this land in colonial times, our community has been alive with trades and crafts as well as farming.

Stagecoaches and freight wagons stopped for the night in our village as they rumbled along the Old Philadelphia Pike on their way from Philadelphia to Lancaster. Local inns and other places of commerce sprang up to service these freight haulers who were helping to build a new country.

We value the history of Bird-in-Hand. It is fitting that even in present times, horse-drawn carriages are still important in our village. We are pleased to live and work here.

## Stoltzfus Family

Along the tree-lined village street called Maple Avenue, our family is practicing the trade of crafting American-made carriages. We carry on the fine tradition of quality craftsmanship that our father began in 1979. It is a privilege to be creative in our work and use our skills and abilities to complement each other's strengths.

## Our Carriages

Carriage Machine is able to capture the whole spectrum of carriage making. We enjoy crafting carriages for pleasure driving, competitions, and marathons.

Our goal is to be versatile and skilled in many areas so that we can build the perfect carriage to meet your specifications. We love the challenge of changing designs and developing new carriage types in response to your requests.

## Made in Lancaster County

Along with the other craftsmen in the Plain Communities of Lancaster County, we desire to provide our industry with the best products possible at the fairest price. That is the way we do business in Bird-in-Hand. We are blessed to be a part of this community where integrity and honesty are a part of daily commerce.

# Table of Contents

## BIRD-IN-HAND



Marathon Cart .....	4
Eaglet.....	5
Roadster.....	6
Road Cart.....	7
Eagle.....	8
Flyer .....	9
Red Hawk .....	10
Sparrowhawk.....	11
Phaeton Sport.....	12
Wheelchair Accessible Carriage .....	13
Lightweight Wagonette.....	14
Large Wagonette.....	15
Article: <i>Carriage Weight &amp; Your Horse</i> .....	16

## BELLCROWN



Aerocrown .....	18
Minicrown .....	19
Phantom .....	20
Badger .....	21
Shetlander.....	21
Freedom Therapeutic .....	22
Options .....	23





# The Marathon Cart



*BIH Marathon Cart with  
Meadowbrook fenders*

The **Bird-in-Hand Marathon Cart** is very similar to the Meadowbrook Cart except that it has a straight shaft and is a lighter vehicle. A very versatile two-wheeled cart, it is used for training, exercising, and pleasure drives and is especially excellent for marathons. The natural wood stain and painted black iron make a striking contrast. The **Marathon Cart** is considered a starter carriage. It can be stripped down – no fenders and no dash – and used solely as a training cart. Available in sizes to fit 13 to 18 hh. Approx. 280 lbs.

#### Included in Base Price:

- Box under seat
- Wooden dash
- Expanded metal foot guards
- Painted hubcaps
- Double seat
- Patent leather on shafts
- Wooden shafts with steel heel
- Plain vinyl or imitation cord upholstery
- Wooden wheels



*Box under seat*



*Split seat*

The **Bird-in-Hand Eaglet** derives its name from the Bird-in-Hand Eagle because the front ends of the two carriages are the same. What makes the **Eaglet** different is the larger side panel and the fact that it is a two-wheeled carriage. It is a pleasure vehicle and can also be used for show and combined driving events.

Available in sizes to fit 12 to 18 hh

Approx. 350 lbs.

# The Eaglet



**BIH Eaglet** with wedge & 1/4 Seat



**BIH Eaglet** with spindle seat.



**BIH Eaglet** with tufted upholstery.

## Included in Base Price:

- Painted hubcaps
- Painted metalwork in choice of color
- Oak panels
- Double seat
- Patent leather on shafts
- Wooden shafts with steel heel
- Plain vinyl or imitation cord upholstery
- Wooden or metal wheels



Hans Neudel drives a **BIH Eaglet**  
(Photo by Deb Neudel)



Pam Bond-Simmons drives a **BIH Eaglet**



JoAnne Frechette drives a **BIH Eaglet**  
(Photo by Gene Fletcher)





# The Roadster



The popular **Bird-in-Hand Roadster** is a front entry cart rather than one with a rear entry, something many people prefer for easy accessibility. It features an adjustable seat, which can be moved back and front to achieve better balance.

A two-wheeled cart is considered somewhat safer for beginners than a four-wheeled vehicle. The **Roadster's** uses are for show, training, pleasure driving, and combined driving events.

Available in sizes to fit 13 to 18 hh  
Approx. 300 lbs.

## Included in Base Price:

- Wooden body slats
- Box under seat
- Painted hubcaps
- Double seat
- Shifting rail seat
- Patent leather on shafts
- Wooden shafts with steel heel
- Toe Rail
- Plain vinyl or imitation cord upholstery
- Wooden wheels



**BIH Pony Roadster**



**BIH Roadster** painted in bold yellow & black



**BIH Mini Roadster**

"The lovely combination of horse and Roadster carriage is perfect! The gold pinstriping on my Roadster matches well with my horse. The great match creates an elegant picture. Even the judge commented on it. Carriage Machine does a beautiful job."

--Kathy Meyer, Meadow Wind Farm, Berneville, PA



Amie Bauman drives a **BIH Roadster** (Photo by Stephen Crowers)



# The Road Cart

The **Bird-in-Hand Road Cart** is a light-weight, two-wheeled vehicle that has a rear entry. There is a shifting seat unit that moves the seat back and forth to achieve the best balance. This very light carriage is wonderful for shows, marathons, combined driving events, pleasure drives, and training. It is truly a multi-purpose vehicle.

Available in sizes to fit 13 to 18 hh

Approx. 203 lbs. in the pony size

Approx. 270 lbs. in the draft size

## Included in Base Price:

- Wooden body slats
- Box under seat
- Painted hubcaps
- Double seat
- Shifting rail seat
- Patent leather on shafts
- Wooden shafts with steel heel
- Plain vinyl or imitation cord upholstery
- Wooden wheels



*BIH Road Cart in a natural finish*



*Painted BIH Road Cart with spindle seats*



*Bonnie Fahrner in her BIH Road Cart (Photo by MikeScottPhotos.com)*



*Jennifer Jensen in her BIH Road Cart  
(Photo by Terry Young Equine Photography)*





# The Eagle



*BIH Eagle with wedge & half seat, with Glen Moody groom step, with oak panels*

The **Bird-in-Hand Eagle** is primarily designed for show, but is also an excellent choice for marathons. It is wonderful to use for combined driving events while still retaining the look of a traditional vehicle. With its lightweight Phaeton design, the Eagle has been driven for many occasions such as weddings and on Acadia National Park carriage roads. It is a great single vehicle and can also be used for pairs.

The **Eagle** is a popular vehicle that lends itself well to modifications and individual adjustments. The interchangeable attachments make it a carriage that meets very specific needs.

Available in sizes to fit 12 to 17 hh

Approx. 460 lbs.

Mini Eagle fits mini horses

Approx. 300 lbs.

## Included in Base Price:

- Painted hubcaps
- Painted metalwork in choice of color
- Oak panels
- Double seat
- Patent leather on shafts
- Wooden shafts with steel heel
- Plain vinyl or imitation cord upholstery
- Wooden or metal wheels



*BIH Eagle with wagonette style seating and full coach paint.*



*BIH Eagle with spindle seat & rear dickey seat.*



*BIH Mini Eagle*



*Susan Gregorio in a BIH Eagle (Photo PICS OF YOU)*



*Susan Salster in her BIH Eagle (Photo by Maureen McCullough)*



*Judith Tintera & Chuck Tintera in a BIH Mini Eagle (Photo PICS OF YOU)*



# The Flyer

The two-person **Bird-in-Hand Flyer** is a light-weight vehicle. It is elegant in its design and is excellent to take to shows. It is also suitable for all three phases of a combined driving event.

Even after more than twenty years on the market, the **Flyer** has retained its resale value better than any other modern traditional carriage.

Available in sizes to fit 12 to 16 hh

Approx. 350 lbs.

## Included in Base Price:

- Hatch back
- Painted hubcaps
- Painted metalwork in choice of color
- Oak panels
- Double seat
- Patent leather on shafts
- Wooden shafts with steel heel
- Trunk box
- Plain vinyl or imitation cord upholstery
- Wooden or metal wheels



**BIH Flyer** with removable back step, flush hubs, drum brakes and Bedford Cord upholstery.



**BIH Flyer** with spindle seat



**BIH Flyer** with groom step

## Character

is doing the right thing when nobody is looking.



Lydia Gray in a **BIH Flyer**  
(Photo by Dream Vision Photo)



# The Red Hawk

The **Bird-in-Hand Red Hawk** was developed for versatility; it truly is one carriage that fits all. It can be used in all three events of combined driving. Basically a marathon vehicle, the Red Hawk can also be used for training, pleasure driving, sporting events, and can be dressed up for show. The goal is to make the **Red Hawk** affordable to as many carriage enthusiasts as possible.

Available in sizes to fit 13 to 16 hh

Approx. 350 lbs.

Pony Size fits 11 to 14 hh

Approx. 340 lbs.

Mini Size fits 36" to 12 hh

Approx. 260 lbs.



## Included in Base Price:

- 2-wheeled disc brakes
- Shaft cover
- Regular groom step
- Painted hubcaps
- Double seat
- Independent metal shafts w/ singletree
- Plain vinyl or imitation cord upholstery
- Metal wheels with regular hubs
- Regular whip socket
- Rear seats with seat backs
- Tree cutters



**BIH Pony Size Red Hawk** with pneumatic wheels.



**BIH Mini Size Red Hawk**  
275 lbs. - recommended for 10-12h minis



**BIH Red Hawk** dressed up with spindle seat & tufted upholstery.

*Smile.*

It's worth the wrinkles!



Allan Shiells & Ted Mollett in a **BIH Red Hawk** (Photos by PICS OF YOU)



Responding to a growing market for 11-12 hh ponies not requiring a groom, the **Bird-in-Hand Sparrowhawk** is a lightweight four-wheeled carriage without groom step for small ponies. Wider shaft sockets give your pony plenty of room; the movable wedge seat fits a variety of drivers; and this low maintenance, versatile vehicle is usable in all three phases of CDE.

Available in sizes to fit 10 to 12 hh

Approx. 225 lbs.

# The Sparrowhawk



## Included in Base Price:

- 2-wheeled disc brakes
- Shaft cover
- Aluminum hubcaps
- Single wedge seat, adjustable front & back
- Independent metal shafts w/ singletree
- Plain vinyl or imitation cord upholstery
- Metal wheels with regular hubs
- Regular whip socket
- 1 1/2" wide solid tires
- Platform spring suspension in front
- Torsion suspension in the back



## Inhale...

Breathe in all the beauty your soul can take.

## Exhale...

Expel critical and negative thoughts.

## Listen...

Hear the voice of God in some aspect of nature.

## Smile...

Watch the effect on each person you meet.

## Pray...

Communicate with God throughout the day.



# The Phaeton Sport

The brand new **Bird-in-Hand Phaeton Sport** is a classy, four-wheeled vehicle that is owner driven. We have designed it to be a great show carriage to be used in dressage and cones. It is also a very good pleasure carriage. Dashing and sporty, the **Phaeton Sport** is made in America and is instilled with an adventuresome spirit to match that of its countrymen.

Available in sizes to fit  
12 to 17 hh  
Approx. 462 lbs.



**BIH Phaeton Sport** w/ 26" front wheels & 36" rear wheels. Standard seat rail w/ high sided round wedge and 1/4 seats. 11" patent leather dash.

## Included in Base Price:

- Metal wheels
- Independent metal shafts
- Full fifth wheel
- CMS delayed steering
- Wooden dash
- Wooden fenders
- Dickey seat
- Choice of paint and upholstery colors



Gale Hepfinger & Meredith Commons Russo  
in a **BIH Phaeton**  
(Photo by Stewart Dean)



Barbara Akers in her **BIH Phaeton**  
(Photo by Tony Dantonio)



(top) Wooden fenders with optional lamps  
(bottom) Patent leather fenders with optional lamps for **BIH Phaeton**



The **Bird-in-Hand Wheelchair Accessible Carriage** is primarily manufactured for use in therapeutic driving centers and for drivers and riders who use wheelchairs. The front seat is removable so that a wheelchair occupant can either drive or ride. The rear ramp can be stored in an upright position, which allows a wheelchair occupant to face forward or sideways in the back of the carriage with an assistant.

The **Wheelchair Accessible Carriage** offers wonderful therapy to those who have limited mobility. Driving a horse and carriage has a calming effect that is not present when traveling in motorized vehicles.

Available in sizes to fit 15 to 18 hh

#### Custom made to fit your specifications.

##### Available with:

- Brakes
- Full fifth wheel
- Full cut under
- Pole or shafts
- Oak panels
- Plain vinyl or cord imitation upholstery
- Ramp (can be stored in vertical or horizontal position allowing versatile seating options)

# The Wheelchair Accessible Carriage



Custom **BIH Wheelchair Accessible Red Hawk** for Running Brook Farm that folds down in the center (see left photo) to allow easy transfer from a wheelchair.



Ramp in loading position.



Ramp in horizontal position.



Ramp in vertical position.



Seat removed for wheelchair.



# The Lightweight Wagonette

**The Bird-in-Hand Lightweight Wagonette** is a lighter construction than the large wagonette. It has many uses: picnics, going to the races, pleasure drives, competitions, and commercial carriage rides. The body design is similar to the larger wagonette and uses a 3-spring gear.

Available in sizes to fit 12 to 16.2 hh  
Approx. 650 lbs.



#### Included in Base Price:

- Painted hubcaps
- Painted metal work in choice of color
- Oak panels
- Double seat
- Patent leather on shafts
- Regular wood shafts with steel heel
- Plain vinyl or imitation cord upholstery
- Wooden or metal wheels

**"The solid construction, balance, and smooth ride of the Bird-in-Hand Wagonette helped guarantee a successful first drive for the Buckskin Morgan Mare named Baby."**

**--Kris Penrod**

*"We use our **Bird-in-Hand Lightweight Wagonette** daily since the horses need to get comfortable with the vehicle before going into the show ring. It is a great lightweight carriage for transporting and also great for different styles of driving. It stands the test of time and changes with me as I grow as a driver."*

**- Margaret Sproul**



**Margaret Sproul & Jessica Sewall in the BIH Wagonette**  
(Photo by Carl Dixson)





The **Bird-in-Hand Large Wagonette** is wonderful for everyday use with pairs or four-in-hand. It is great to drive to the races, take on a hunt, or go on a pleasure drive. Engineered to make tight turns when necessary, the **Large Wagonette** maneuvers well through forest trails. It can be designed with walk-through seating up front. You can climb on the back, walk between the seats, and step up to the front where the seat is divided. This carriage has a full fifth wheel with four elliptical springs that gives it stability.

Available in sizes to fit 13 to 18 hh

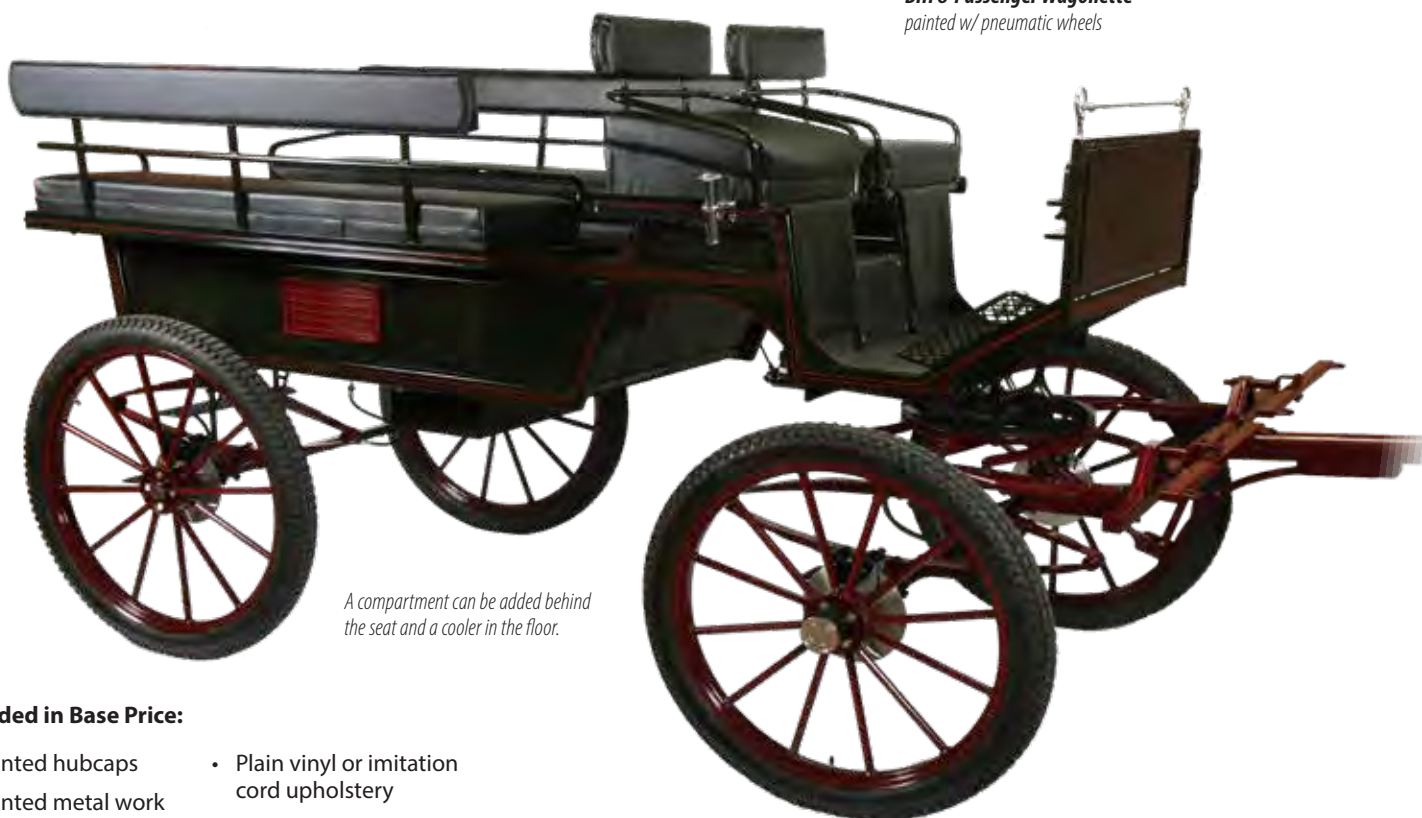
6 Passenger: Approx. 680 lbs.

8 Passenger: Approx. 850 lbs.

# The Large Wagonette

6 or 8 passenger

**BIH 8-Passenger Wagonette**  
painted w/ pneumatic wheels



*A compartment can be added behind the seat and a cooler in the floor.*

## Included in Base Price:

- Painted hubcaps
- Painted metal work in choice of color
- Oak panels
- Double seat
- Plain vinyl or imitation cord upholstery
- Wooden or metal wheels



Michael Keatley in a **BIH Wagonette** (Photo by Ilene Keatley)



Mark Duffell & guests in a **BIH Wagonette**  
(Photo by Karmin Benton)

# CARRIAGE WEIGHT & YOUR HORSE:

## How Much Weight is Safe for a Horse to Pull?

Given the increased participation of Very Small Equines (VSE) in ADS events, we find the need for guidance in how much these small horses should be pulling. This information is equally valuable for larger horses.

### DRIVER RESPONSIBILITY

The driver is responsible for knowing the venue as well as limits and capabilities of his/her horse. Ron Whiteman writes in *Carriage Driving World*:

*"Every event has the conditions and types of the terrain posted in advance. Entering an event when the posted terrain will obviously be overwhelming to one's horse, or not withdrawing from a competition when the conditions warrant, would be irresponsible no matter what size horse one might drive."*

### THINGS TO CONSIDER

1. **Horse strength - weight, physical condition (fitness & feeding), natural ability, temperament, conditioning**
2. **Road surface - hard vs. soft surface (level asphalt/concrete vs. dirt/gravel/deep sand/heavy mud)**
3. **Horse shoes & traction - Slippery surfaces make more work for the horse, especially starting & stopping. Plain horseshoes are acceptable on some surfaces, but may be very slippery on hard pavement or icy roads. Proper shoeing (slip protection at the toe & studs) is essential. Also, try borium on the shoe to help prevent slipping.**
4. **Vehicle - Know the unladen weight of your cart/wagon and inscribe it on the pole. (Consider weighing yourself and your horses as well.) There's also friction between the axle, wheel, and the ground, so be sure to regularly lubricate wheels & turntable.**
5. **Weight distribution - On heavy loads weight should be one-third on the front axle and two-thirds on the rear axle. Also, adjust the reins and alter the leverage of the doubletrees or eveners.**
6. **Grade - Increase in grade means more work for the horse.**
7. **Type of work - speed, stops & starts, acceleration needed.**
8. **Harness & hitching - proper harness fitting, be sure checkrein allows horse to stretch his neck, adjust angle of draft of the trace for maximum pulling power.**
9. **Driver's skill - smooth starts & stops.**
10. **Animal Care & Rest - Give rests after heavy exertion. When halting on a steep incline, engage brake or place brake-shoe under rear wheels. Cover horse with a rug in the sun or cold. Water horse often in hot weather.**
11. **Weather conditions - Be especially vigilant of temperature and humidity.**

### SUGGESTED WEIGHT RANGES

Horses' capabilities are partly defined by their conditioning. The type of work expected seriously impacts how much weight the horse can handle safely. The following ratios are general guidelines for load weights. It's up to the driver to adjust the load according to factors that change the amount of work required.

#### Continuous work with occasional heavy pulling and short rests:

- 1:3 - Flat road (horse can pull 3 times its own body weight)
- 1:2 - Bad or hilly roads
- 1:1 - Very bad roads, fields, sand, mountains - (horse can pull its own weight)

#### Combined driving marathon:

- 1/2 to 3 times the horse's body weight

### VERY SMALL EQUINES (VSE)

Background: In the early stages of miniature horse breeding, the goal was to develop the smallest horse. "In pursuits to that end a diversity of genetics from all the smaller breeds of horses was infused into developing the miniature horse. Many of those foundation breeds were developed from hardy stock that worked in underground mines and survived in such harsh environments that most equines would have perished. The ultimate goal was to produce a horse under a certain height that maintained the proportions of a well-balanced horse." In the 1970's, breeders began developing a miniature horse specifically suited for pulling a cart. It seems that their efforts produced a small horse breed with unique endurance and abilities.

How much weight should a healthy, fit VSE be expected to pull? The driver should responsibly consider all the factors listed, especially combinations of exceptionally challenging conditions. Under certain conditions, minis can handle a higher ratio of carriage and driver to horse than larger horses, as much as 1 1/2 up to 10 times their own weight.

These numbers are very impressive, but what is a safe, practical guideline? When conditioned for a specific task, the average 34-inch, 200-pound VSE can easily pull about 1 1/2 times his weight.

Obviously, there isn't a simple answer to the weight question, but a responsible driver can make an educated estimate based on the information provided here.

### REFERENCES:

"Very Special Equines: Small but Strong, A Driver's View on Suitability" by Ron Whiteman. *Carriage Driving World*. February/March 2008. p32-34.

"How Much Weight Should a Horse Pull?" *Driving Digest Magazine*. p35 & 42.







## British Carriages Cross Over to America

During the past several decades Bellcrown has gained a well-established international reputation as a leading carriage line for equines of all sizes and breeds. Begun in England in 1980, Bellcrown's particular has always been lightweight and simple designs that are especially great for mini-horses, ponies, donkeys, and small horses.

### Made in America

Due to the increasing popularity of the Bellcrown carriages in the USA, we at Carriage Machine began the production of these proven British designs in our Bird-in-Hand facility in 2006. By manufacturing them stateside, we offered reduced delivery times, better prices and exceptional local customer service.

We have been the sole owners and manufacturers of the Bellcrown line since 2008. We are equipped to produce the carriages to the highest standards using modern technology and the finest engineering materials.

### Superide Suspension

All Bellcrown carriages incorporate Superide™ independent torsion suspension that allows for excellent comfort on or off the road. Plus, the axle position can easily be adjusted for perfect balance. This is another way to provide maximum comfort for the equine, whip, and passengers.

### Easy to Dismantle

An outstanding feature of our two-wheeled Bellcrown carriages is the fact that they are easily dismantled. This solves many transport and storage problems for owners of these carriages. Amazingly enough, the two-wheeled carriages are engineered so that they fit into the back of a station wagon or SUV, eliminating the need for pulling a trailer.

Enjoy the exciting New World on board a Bellcrown carriage!

*Bellcrown*



The **Bellcrown Aerocrown** is a single seat vehicle that we created in 2010 especially for miniature horses, ponies, and donkeys. Very similar to the Mini-crown, it has a lighter Superide suspension designed not to exceed a 200 pound load. There is an option for a heavier suspension if desired. The **Aerocrown** has a removable floor so that stirrups can be used. This is a great vehicle for pleasure driving, combined driving events, and marathons. It dresses up nicely and looks sharp for show.

Available in sizes to fit 27" to 36"  
Approx. 95 lbs.

#### Included in Base Price:

- Small aluminum hubcaps
- Single seat with back & side pads with cushion
- Pair of standard shafts
- Bolt-on tubular splashboard
- Plain vinyl or imitation cord upholstery
- Choice of wheel paint color

## The Aerocrown

**"As a beginner, I need to feel as secure and stationary in my cart as possible and the Aerocrown helps me tremendously!"**

**-Jeff Tock, Happy Hill Farm, Ashland, OH**



*Shown with weld-on tubular splashboard, but bolt-on is standard.*



**BC Aerocrown** with EZ Entry option.

**"My Bellcrown Aerocrown with its brown leather single seat and pinstriping gives me a very comfortable ride. Since I have progressive osteoporosis, my dealer went above and beyond to assure me of what would work best for my horse and my personal situation. This has fostered my love for Bellcrown carriages."**

**- Brenda Plass**



Mandy Hood drives a **BC Aerocrown**  
(Photo by Ekberg Equine Photography)



Brenda Plass in her **BC Aerocrown**  
(Photo by Journey Sports Photography)



Janey Randlett, Eloise Nelson & Judi Tintera in a trio of **BC Aerocrowns**.  
(Photo by Mary DeGreef)







# The Minicrown



*Shown with 68 cm wheels, splashboard and mesh basket.*

The **Bellcrown Minicrown** is a heavier version of the Aerocrown and comes with a semi-double seat. Its durable and lightweight construction makes it easy to dismantle for transport. The stylish two-wheeled **Minicrown** has adjustable balance and the comfortable Superide suspension system. Designed specifically for miniature horses, ponies, and donkeys, it is a popular vehicle that has all of the main features of our larger two-wheeled carriages.

Available in sizes to fit 27" to 36"  
Approx. 120 lbs.

#### Included in Base Price:

- Small aluminum hubcaps
- Semi-double seat
- Pair of standard shafts
- Tubular splashboard
- Plain vinyl or imitation cord upholstery
- Choice of wheel paint color



**BC Minicrown** with EZ entry option.



**BC Minicrown** with optional tufted upholstery & pinstriping.



**BC Minicrown** with optional wider seat.

"My Bellcrown Minicrown is the smoothest, most comfortable cart I have ever driven. I love how its design allows for perfect posture. It is perfectly balanced, allowing my mini to pull it effortlessly. It is light in weight, yet solid in design. I drive it four to five times a week on all kinds of terrain and it has held up well. I could not ask for more!"

-Mary Ann Tock, Happy Hill Farm, Ashland, OH



Jeff Tock in a BC Aerocrown & Mary Ann in a **BC Minicrown**



LuLu the Cavalier King Charles Spaniel aka carriage dog extraordinaire





# The Phantom



The **Bellcrown Phantom** is one of our popular carriages that has some of the best features we offer. Its winding axle balance and comfortable ride make the **Phantom** an ideal choice for all driving disciplines: from leisure driving to pleasure showing to combined driving events. A nice option is that the traditionally shaped seat pedestal panels are removable and interchangeable.

Available in sizes to fit 11 to 16 hh  
Approx. 198 lbs.

## Included in Base Price:

- Mesh basket under seat
- Extendable axle to 138 cm
- Footsteps / Tree guards
- Small aluminum hubcaps
- Double seat
- Standard seat pedestal back & side panels
- Pair of standard shafts
- Standard splashboard panel
- Plain vinyl or imitation cord upholstery
- Choice of wheel paint color



Clyde Canino & Jack Bloss in a **BC Phantom**



Linda VavRosky in her **BC Phantom** (Photo by Mike VavRosky)





# The Badger



The **Bellcrown Badger** is a popular carriage with the shafts extending out of the carriage above the toe board. A wider shaft socket can be added as an option to provide more bending capabilities for the horse while turning. Other upgrades are available to give the **Badger** a sharp and classy look. It is a great carriage that offers comfort and safety for on and off road driving.

Available in sizes to fit 11.2 to 15.2 hh  
Approx. 143 lbs.

## Included in Base Price:

- Small aluminum hubcaps
- Double seat
- Standard seat pedestal side panels
- Pair of standard shafts
- Tubular splashboard
- Plain vinyl or imitation cord upholstery
- Choice of wheel paint color

# The Shetlander



The **Bellcrown Shetlander** is a carriage named for the Shetland pony, a breed that originated in the Shetland Isles, northeast of mainland Scotland. This lightweight, two-wheeled vehicle is designed specifically to be used for Shetlands but can also be used for other small ponies and donkeys. The double seat adjusts back and forth for better balance and expanded legroom. Better balance can also be achieved through bolting and unbolting the axles. Options include wooden panels to dress the **Shetlander** up for show, resulting in a heavier carriage.

Available in sizes to fit 9 to 10.2 hh  
Approx. 124 lbs.

## Included in Base Price:

- Small aluminum hubcaps
- Double seat
- Pair of standard shafts
- Tubular splashboard
- Plain vinyl or imitation cord upholstery
- Choice of wheel paint color



Lucia Owen drives her **BC Badger**  
(Photo by James B. Owen, FRPS)



Lydia Fisher in her **BC Badger**



Deborah Rice & Jocelyn Deschene in a **BC Badger Special** (Photo by Mark Krawec)



# The Freedom Therapeutic

The **Bellcrown Freedom Therapeutic** is a comfortable, lightweight two-wheeled carriage developed in conjunction with disabled and experienced able-bodied whips. Approved by the British Riding and Driving for the Disabled Association, the **Freedom Therapeutic Carriage** is the obvious choice for special needs driving.

Available in sizes to fit 11 to 15 hh  
Approx. 400 lbs.

## Accessible to Everyone



Back area holds a scooter or wheelchair.

Rear props provide stability for loading and unloading a wheelchair.

Perfect balance is achieved, irrespective of the weights of occupants, by simply and quickly moving the axle via the rear mounted winding handle.

Solid low profile tired steel wheels reduce drag on soft ground.

Weight: Approx. 400 lbs. • Anti-slip wood flooring • Stainless steel bolts, nuts, and fastenings are used throughout. Supercede independent torsion suspension provides a smooth, safe ride even over rough ground.

A second seat unit for use by semi-ambulant drivers is available as an option and this is secured quickly and firmly onto the aluminium tracking.

Shafts can be removed to reduce storage or transport space and a swingletree is provided with pigtail or loop ends as required.

Aluminium floor tracks are fitted to enable wheelchair fixings to be quickly used and also AB's seat adjusted or removed.

The long footsteps and open cab front design offers easy front entry and exit, the fold down ramp provides wide wheelchair access from the rear.

### Included in Base Price:

- Footsteps
- Small aluminum hubcaps
- Standard paneling mudguards
- Ramp
- Single seat with back
- Pair of standard shafts
- Standard splashboard panel
- Plain vinyl or imitation cord upholstery
- Choice of wheel paint color



Steve Newton & Instructor Lynn Redden  
in a **BC Freedom Therapeutic**  
(Photo by Bridget Donnelly)



Seats can be easily removed making room for a wheelchair.



Back folds down into a ramp for easy wheelchair access.







# Options

## BOXES



Box for under seat  
(great for lead ropes  
& vet supplies)



Stainless or galvanized  
cooler in floor of  
wagonettes

## BRAKES



Optional 5th  
Wheel Brake



Disc brakes (2 or 4 wheeled)  
Hydraulic Drum Brakes  
(2 or 4 wheeled)  
Brake Lock

## CART STANDS

For storage or showing off 2-wheeled carts. Regular or Folding.



*Folds up for easy storage to take along to shows!*

## COVERS

2-wheeled  
4-wheeled  
Shaft Cover

Boxes.....	23
Brakes .....	23
Cart Stands .....	23
Covers.....	23
Dashes.....	23
Fenders .....	23
Hub Step.....	24
Foot Guards.....	24
Leader Bars .....	24
Lights & Wiring.....	24
Hubcaps.....	24
Lamp Brackets .....	24
Louvers.....	24
Rear Attachments .....	25
Rein Rail .....	25
Seats.....	25
Panel Options .....	26
Shaft / Pole Options .....	26
Sleigh Runners .....	26
Speedometer.....	26
Tops .....	27
Upholstery Options & Colors.....	27
Wheels.....	27
Whip Sockets .....	27

## DASHES



Patent Leather Dash



Large Switch Box  
(birds eye maple or oak)



Dash Tray & Cup holder  
(oak or birds eye maple)



Painted Wood Dash



Wooden Dash (oak)

## FENDERS

Flat Wood    Half Moon



Patent Leather w/  
optional lamp bracket



Wooden w/ optional  
lamp bracket



Patent Leather



Meadow Brook

## FOOT GUARDS



Metal



Wood



Metal bolt-on

## HUB STEP



Removable hub step can be added to your carriage for easier access.

## HUBCAPS



Painted



Chrome



Brass

## LAMP BRACKETS



Post Lamp Brackets



Cup Lamp Brackets

## LEADER BARS



- Pole for Pair
- Padded Pole Cover
- Pole for Pair w/ Shock Absorber
- Pole for Pair w/ Shock Absorber & Eveners
- Pole for Pair w/ Evener
- Pole Head - Crab for 4-in-Hand w/ Safety Strap
- Pole Head - Swivel Yoke



Shock absorber style pole unit w/ metal singletree w/ loops for quick releases

## LIGHTS & WIRING



rear view

LED headlights & taillights available w/ small battery & triple charger

## LOUVERS



Provides an authentic look and dresses up your carriage





# Options

## REAR ATTACHMENTS



**Trunk Box**  
*Offers extra storage for picnic drives.*



**Flyer Groom Step**  
*Great for combined driving!*



**Glen Moody Style Groom Step**  
*Great for combined driving!*



**Wagonette Style Groom Step**  
*Wonderful for pleasure drives!*



**Dickey seat**  
*Nice for Dressage!*

## REIN RAIL

Brass



Chrome



## SEATS



**Half Height Tufted Pillow Wedge**  
(w/ straps)



**Regular Black Vinyl Pillow Wedge**  
(w/ straps)



**Regular dickey seat**



**Front or Dickey Seats:**  
20" Single or 40"  
Double (with or without spindles)



**Double Seat**



**Single 20" Seat** (birds eye maple or oak)



**Spindle Seat**  
(20", 36", or 40")



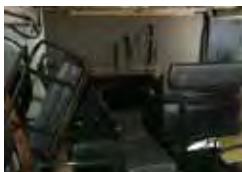
**Cove Molding Seat**  
(20", 36", or 40")



**Gig Spindle Seat** (birds eye maple or oak)



**Gig Spindle Seat w/ Seat Back**



**Walk Thru Seat**



**Shifting Rail Seat**



**Split Seat**



**Medium Wedge & 1/4 Seat**



**Medium Wedge & 1/2 Seat**



**High-side Round Wedge**



**Tapered High Side Wedge**

## CRICKET

False floor w/ 3"-5" rise for shorter legs to make driving more comfortable.

## PANEL OPTIONS



Oak w/ red oak stain



Oak w/ walnut stain



Oak w/ wheat stain



Oak w/ ebony stain



Birds-eye maple w/ wheat stain



Birds-eye maple w/ red oak stain



Birds-eye maple w/ walnut stain

## PAINT COLOR SAMPLES



## PINSTRIPES COLORS



Colors shown are approximate.  
Ask to see samples before finalizing your order.

## SHAFT / POLE OPTIONS

**Leather on Shafts-** Patent leather

### Metal Shafts

Long bend



Short bend



**Regular Wood Shafts w/ Steel Heel**

**Metal Marathon Shafts**

Regular closed loop



Stainless steel closed loop



**Stainless Steel Shafts**

**Metal Shafts w/ Heel & Singletree**

**Spare Single Tree**

## SLEIGH RUNNERS



Replaces wheels on your carriages for snow outings. Call for details.

## SPEEDOMETER



Battery powered



## TOPS



Parasol



Folding Top



Surrey Fringe Top



*Options*

## UPHOLSTERY OPTIONS & COLORS

Real Bedford Cord - gray & tan (plain or tufted)



41



29

Wide Imitation Cords



42

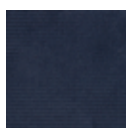


39



27

Medium Imitation Cords



20



22



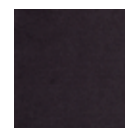
23



24



25



26

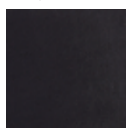


43

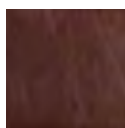


44

Vinyl



30



31



32



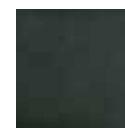
33



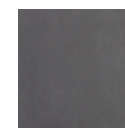
34



35



36



38



40

## WHEELS



Regular Hub Metal Wheels



Wooden Wheels



Pneumatic Wheels



Metal or Pneumatic Wheels with 4-bolt system

## WHIP SOCKETS



Regular (chrome or brass)



Vase Type (chrome or brass)





Distributed by: